



# 2012 Regional Technical Assistance Job Aids



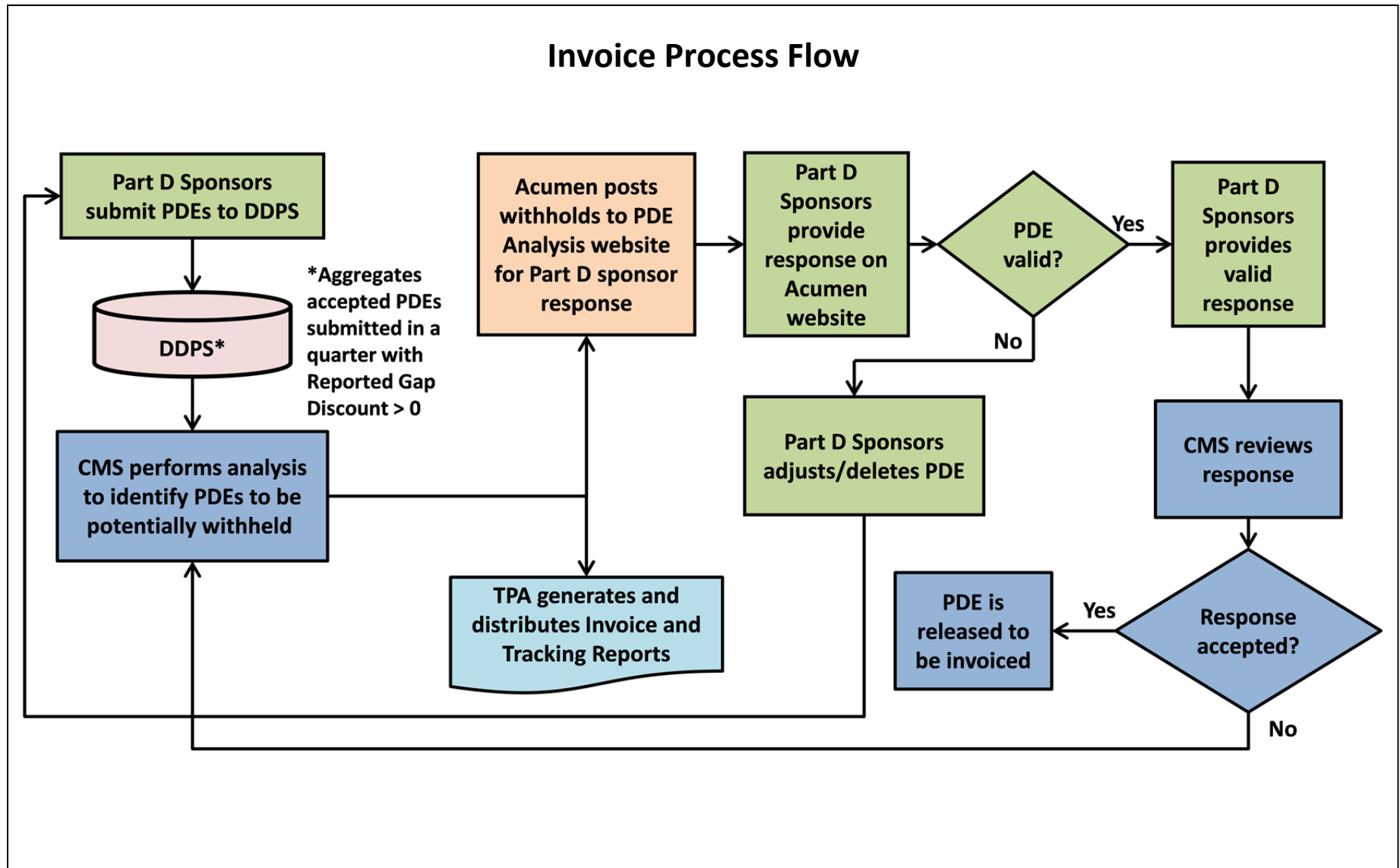
**Thursday, August 9, 2012**

# Prescription Drug Event

## 2012 Immediately Actionable PDE Error Codes

CATEGORY	DESCRIPTION	RESOLUTION	CODES
Missing and Invalid Errors	<ul style="list-style-type: none"> <li>Errors due to formatting mistakes and data inconsistencies</li> </ul>	<ul style="list-style-type: none"> <li>Determine cause of inconsistency, correct, and resubmit</li> </ul>	603 - 645, 648 - 659, 663 - 664, 831 - 834
Catastrophic Coverage Errors	<ul style="list-style-type: none"> <li>Errors inconsistent with Catastrophic Coverage logic</li> </ul>	<ul style="list-style-type: none"> <li>Correct data issue and resubmit</li> </ul>	670 - 675
Cost Field Errors	<ul style="list-style-type: none"> <li>Errors due to cost field summations</li> </ul>	<ul style="list-style-type: none"> <li>Correct data issue and resubmit</li> </ul>	690 - 693, 696, 698 - 699
Beneficiary Related Errors	<ul style="list-style-type: none"> <li>Errors due to beneficiary data inconsistencies</li> </ul>	<ul style="list-style-type: none"> <li>Correct data issue and resubmit</li> </ul>	700 - 702
Low Income Cost Sharing (LICS) Errors	<ul style="list-style-type: none"> <li>Errors related to the failure to grant sufficient low income cost sharing (LICS) subsidies</li> </ul>	<ul style="list-style-type: none"> <li>Plan cost sharing for LICS eligible beneficiaries was less generous than the level set by CMS</li> <li>Plans should correct the LICS levels in their system, refund beneficiary for excessive cost sharing</li> <li>Resubmit PDE with correct LICS cost sharing amount</li> </ul>	716 - 721
National Drug Code (NDC)	<ul style="list-style-type: none"> <li>Errors due to National Drug Code (NDC) validation</li> </ul>	<ul style="list-style-type: none"> <li>Correct data issue and resubmit</li> </ul>	735, 738, 744
Service Provider ID Errors	<ul style="list-style-type: none"> <li>Errors due to service provider ID or service provider ID qualifier mistakes</li> </ul>	<ul style="list-style-type: none"> <li>Edits 780 and 781 - Correct data issue and resubmit</li> <li>Edit 783 - CMS bypassing this edit. Plans should resubmit</li> </ul>	780 - 781, 783
Miscellaneous Errors	<ul style="list-style-type: none"> <li>Other errors CMS considers as immediately actionable.</li> </ul>	<ul style="list-style-type: none"> <li>Confirm Plan Type</li> <li>Plans should only map CPP/NPP for Enhanced Alternative (EA) plans or plans that were told to submit as EA (e.g., employer plans, payment demonstrations)</li> </ul>	779, 786
PACE	<ul style="list-style-type: none"> <li>Errors related to PACE eligibility</li> </ul>	<ul style="list-style-type: none"> <li>Correct data issue and resubmit</li> </ul>	800 - 808, 810 - 819
Gap Discount	<ul style="list-style-type: none"> <li>Errors inconsistent with Coverage Gap logic</li> </ul>	<ul style="list-style-type: none"> <li>Correct data issue and resubmit</li> </ul>	865 - 869

## Invoice Process Flow



## Dispute Process Flow

