

Encounter Data System User Group

February 21, 2013

Agenda

- Purpose
- Session Guidelines
- CMS Updates
- EDS Updates
 - EDS Known Issues
 - EDS Edits
 - Proxy Data Reason Codes
 - ZIP Code +4 Default Value Update
 - EDS Operational Highlights
 - EDPS Bi-Weekly Bulletin Update
- Guidance for New 2013 MAOs and Other Entities
 - Submission Transaction
- Industry Feedback Request
- EDS Implementation Next Steps
- Closing Remarks

Purpose

- To provide Medicare Advantage Organizations (MAOs) and other entities that are currently submitting encounter data with operational guidance on testing and submitting production data to the Encounter Data System (EDS).
- To provide new 2013 MAOs and other entities with resources and operational guidance related to certification and submission of encounter data to the EDS.
- To provide Medicare Advantage Organizations (MAOs) and other entities information on EDS policy.

MAOs and Other Entities

- CMS requires the following types of organizations to submit encounter data:
 - Medicare Advantage (MA) Plans
 - Medicare Advantage-Prescription Drug (MA-PD) Plans
 - Health Maintenance Organizations (HMOs)
 - Special Needs Plans (SNPs)
 - Local Preferred Provider Organizations (PPOs)
 - Regional PPOs
 - Employer Group Health Plans
 - Programs of All-Inclusive Care for the Elderly (PACE) Plans
 - Cost Plans (1876 Cost HMOs/CMPs and 1833 HCPPs)
 - Medical Savings Account (MSA) Plans
 - Private Fee-for-Service (PFFS) Plans
 - Religious Fraternal Benefit (RFB) Plans
 - Provider Sponsored Organizations (PSOs)

Session Guidelines

- This is a one (1) hour Encounter Data User Group session.
- The first portion of this session will address updates for the EDS.
- The second portion of this session will address guidance for new 2013 MAOs and other entities.
- If time allows, the Encounter Data team will facilitate two (2) Q&A periods.

CMS Updates

End-to-End Certification Status

Of the 581 MAOs and other entities and 89 PACE Organizations that have submitted data for 2012, the following have achieved end-to-end certification:

Certification Status as of February 21, 2013

	Professional	Institutional	DME	PACE
Number of MAOs and Other Entities Certified	536	538	532	46

End-to-End Certification Status for New 2013 MAOs and Other Entities

Of the 37 new MAOs and other entities and the 8 PACE Organizations that will begin encounter data submission in 2013, the following have achieved end-to-end certification:

Certification Status as of February 21, 2013

Number of MAOs End-to-End Certified	Number of PACE Organizations End-to-End Certified
30	2

Reminder: The deadline for completion of EDI agreements was February 15, 2013.

As of February 21, 2013, there are seven (7) MAOs and other entities that have not completed EDI agreements.

MAO-002 Reports Update

- For all encounter data submissions, the EDS will return the MAO-002 Encounter Data Processing Status Reports to MAOs and other entities in the order that the files are received.
- The EDPS is currently processing MAO-002 Reports for data received on February 5, 2013.
- If you have not received your MAO-002 Reports for files submitted prior to February 5, 2013, please contact CSSC Operations at (877) 534-2772, with your file information, for assistance.

EDS Updates

EDS

Known Issues

EDPS Known Issues

Edit #	Edit Description	Target Resolution Date
03102	Provider Type or Specialty Not Allowed to Bill Procedure <ul style="list-style-type: none">• <i>Final resolution will cause Edit 03102 to reflect a “Reject” status.</i>	03/29/2013

- The EDPS will perform an analysis of the enhancement for edit 03102 prior to updating the disposition status from “informational” to “reject”.
- CMS will provide MAOs and other entities with notification prior to the edit change implementation.

EDS Edits

EDPS Edits

- The current logic for EDPS edit 21950 – Line Level DOS Is Required For Outpatient Claim does not capture the submission of HCPCS Codes Q0163 – Q0181 when they are submitted without a valid line level DOS.
- Effective March 4, 2013, MAOs and other entities will receive **Edit 22290 – Service Line Requires DOS** with a disposition of “reject” on MAO-002 Encounter Data Processing Status Reports to identify encounters submitted without the line level DOS for HCPCS codes Q0163 – Q0181.

Proxy Data Reason Codes

User

Group

Thursday, February 21, 2013

3:00 P.M. – 4:00 P.M. ET

Proxy Data Reason Codes

- MAOs and other entities may submit proxy data for a limited set of circumstances.
- Currently, the EDS requires that MAOs and other entities populate Loop 2300, NTE02 with a proxy data message to indicate the reason proxy data was submitted.

Proxy Data Reason Codes (cont'd.)

- Loop 2300, NTE02 allows for a maximum of 80 characters, which limits the submission of multiple proxy data messages.
- CMS has developed a methodology for MAOs and other entities to submit multiple proxy data messages and will communicate details for operational guidance during the next User Group session.

ZIP Code +4 Default Value Update

ZIP Code +4 Default Value Update

- MAOs and other entities were given previous guidance to submit a default value of **'9999'** when the true ZIP Code +4 value was not available.
- Due to required CEM updates, *effective May 3, 2013*, MAOs and other entities must populate **'9998'** as the +4 default value when the true ZIP Code +4 value is unavailable.

EDS Operational Highlights

Highlight #1

Minimum Data Elements

- The Minimum Data Elements (MDE) document identifies the minimum data fields to pass translator and CEM level errors and commonly occurring situational elements, but is not all-inclusive.
- MAOs and other entities must continue to reference the TR3, CEM Edits Spreadsheets, and Companion Guides for submission guidance.

Highlight #2

2012/2013 DOS - Risk Score Calculation

- CMS will not use 2012 DOS encounter data to determine Risk Adjustment calculations.
- CMS has not yet made final decisions regarding the use of 2013 DOS encounter data.
- CMS will notify MAOs and other entities once final decisions are made for Risk Adjustment calculations.

Highlight #3

Chart Review – Additional Diagnoses

- If MAOs and other entities submit linked chart review encounters to add diagnoses, it is not necessary to include the diagnoses populated on the original encounter.
- When the chart review is linked to an original encounter with an accepted ICN, the original diagnosis is already stored in the Encounter Operational Data Store (EODS) and is not required on the chart review encounter.

Highlight #4

Submission Frequency

- The minimum frequency of submission is based on enrollment size.
- MAOs and other entities may submit data as often as daily.

Number of Medicare Enrollees	Minimum Submission Frequency
Greater than 100,000	Weekly
50,000 – 100,000	Bi-weekly
Less than 50,000	Monthly

Highlight #4

Submission Frequency (cont'd.)

- CMS will use Health Plan Management System (HPMS) enrollment, as of February 2013, to determine which category will be applied to each MAO or other entity.
- This will be communicated to MAOs and other entities during the month of April 2013.

Questions & Answers

Guidance for New 2013 MAOs and Other Entities

Submission Transaction

Submission Transaction Overview

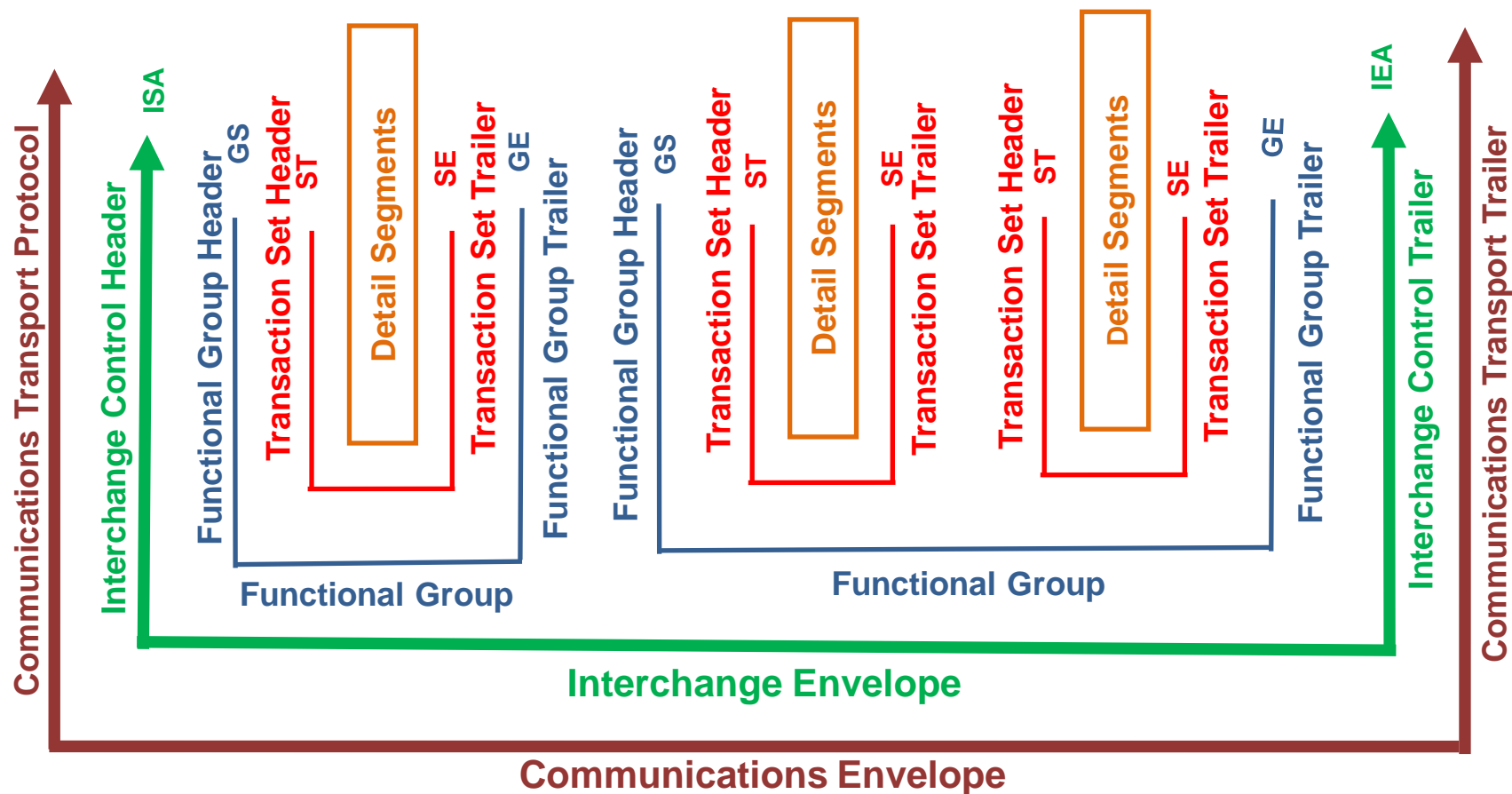
- This guidance will provide an overview of the enveloping structure and transaction sets for submission of encounter data.
- The EDS team will outline the process for submitting an encounter to the EDS.

Submission Transaction (cont'd.)

- The 837-I and 837-P are used to submit health care claim billing and encounter information from providers of health care services to payers, either directly or by intermediary billing services, and claims clearinghouses.
- MAOs and other entities should reference the TR3 Implementation Guide located at <http://www.wpc-edi.com> for the details regarding the required data fields for submission of encounter data.

Submission Transaction

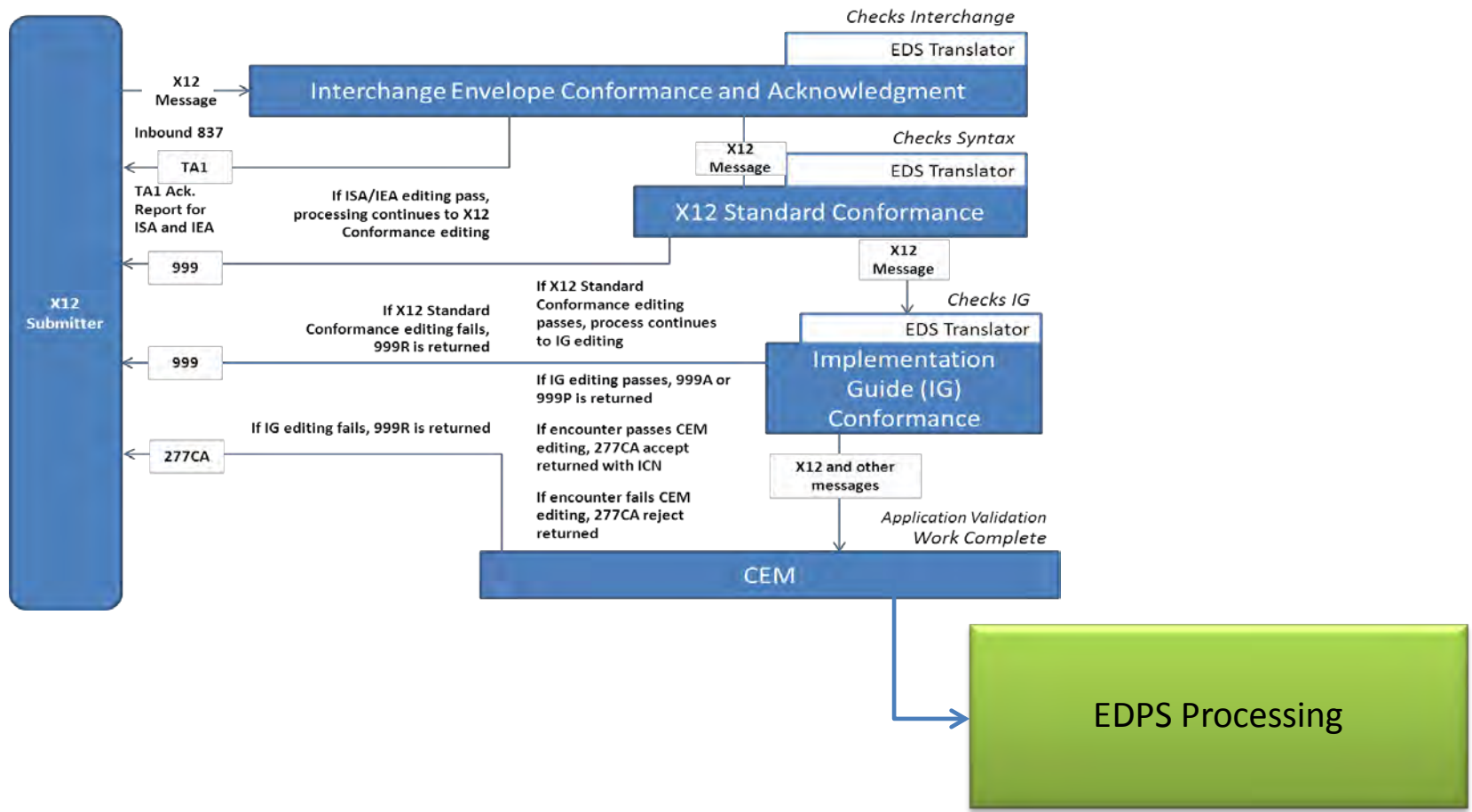
Enveloping and Looping Structure



Submission Transaction Roles

- When encounter data is received by an MAO or other entity, reformatting must occur **from** the inbound claim **to** the outbound 837-I or 837-P encounter.
 - For the purpose of processing an inbound file, MAOs and other entities are considered receivers.
 - For the purpose of the EDS outbound files, MAOs and other entities are considered submitters.

Submission Transaction EDFES Editing Flow

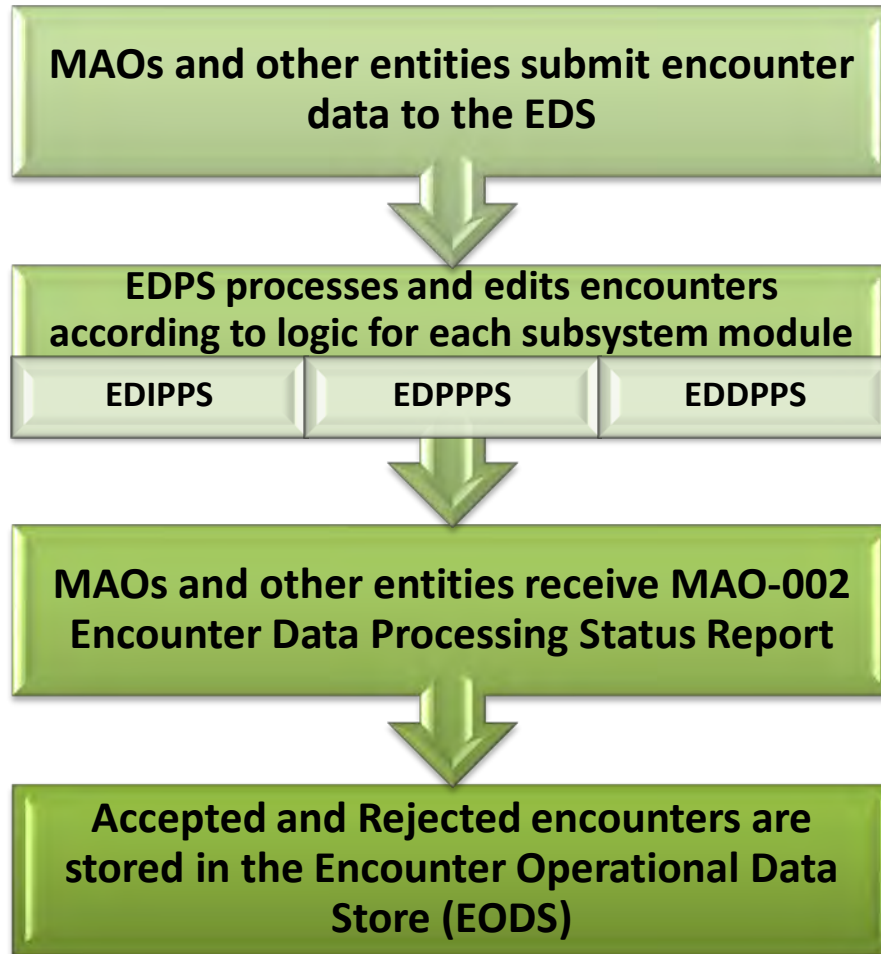


Encounter Data

User Group

Thursday, February 21, 2013
3:00 P.M. – 4:00 P.M. ET

Submission Transaction EDPS Processing Flow



Encounter files accepted by the EDFES are assigned an ICN and transferred to the Encounter Data Processing System (EDPS) for processing.

The EDS processes Institutional, Professional, and DME encounters, which are identified according to the payer ID

80881 – Institutional | 80882 – Professional | 80887 - DME

After processing and editing occurs, the EDPS returns MAO-002 Reports to submitters.

Submitters correct errors and resubmit encounters

All encounters (accepted or rejected) with an ICN are stored in EODS.

Submission Transaction Business Scenarios

- CMS has provided business case scenarios to assist MAOs and other entities with accurate submission guidance for encounter data.
- Refer to the EDS Companion Guides for the Business Case Scenarios for Professional, Institutional, and DME encounter submission located on the CSSC Operations website at <http://www.csscoperations.com>.

Note: Reference 9.5 – Complete Replacement Adjustment in the Professional Companion Guide for the complete data string in the following scenario.

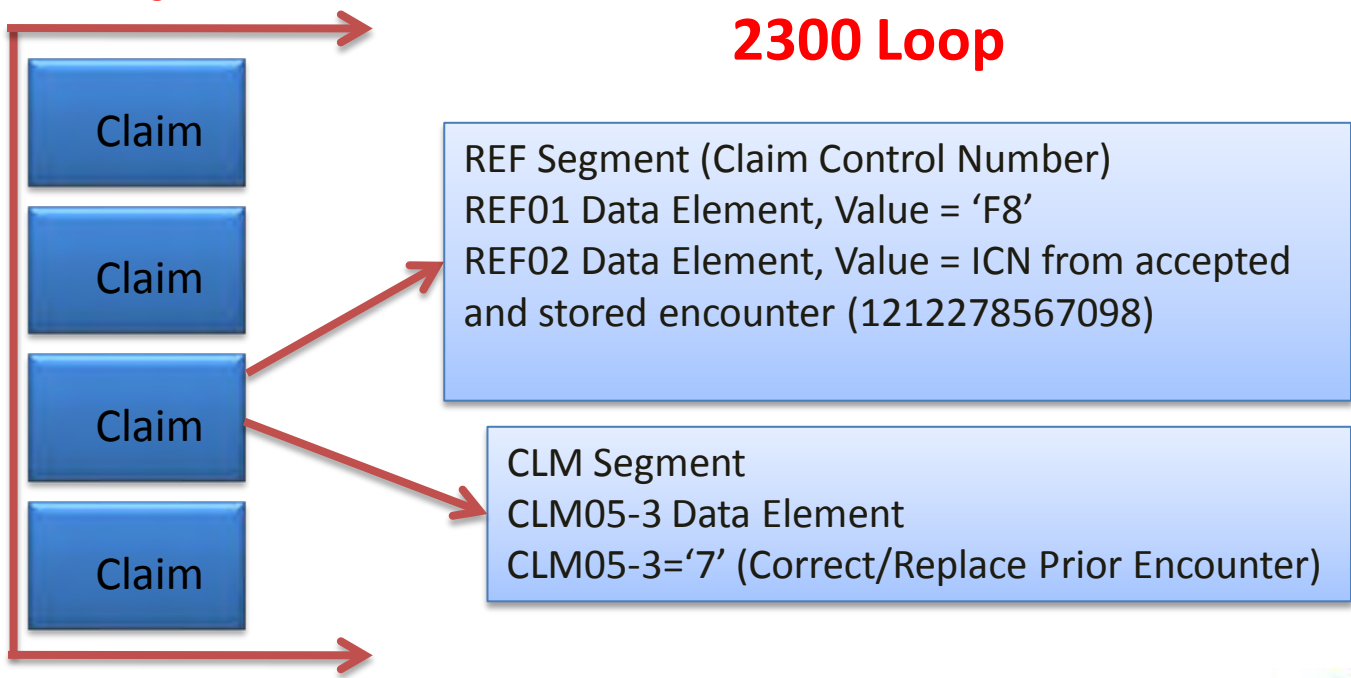
Submission Transaction – Business Scenario for Correct/Replace

Complete Replacement Adjustment Partial Data String

```
CLM*2997677856479709654A*100.50***11:B:7*Y*A*Y*Y~
REF*F8*1212278567098~
HI*BK:78901~
SBR*P*18*XYZ1234567*****16~
```

ST

2300 Loop



SE

Industry Feedback Request

Industry Feedback Request – Part B Drugs & Foreign Providers

- CMS is currently evaluating EDS guidelines that will allow the collection of encounter data for Part B Drug data and Foreign Provider services.
- In order to determine appropriate requirements for EDS submission of Part B Drugs and Foreign Providers, CMS is requesting feedback from MAOs and other entities.

Industry Feedback Request – Part B Drugs & Foreign Providers (cont'd.)

- **Part B Drugs**

- Provide information regarding the percentage of professional claims submitted in the NCPDP format.
 - Of those claims, how many include valid NDC codes.
- Submit the information to eds@ardx.net.
 - Place in the subject line “NCPDP with NDC”.

- **Foreign Providers**

- Provide information regarding the percentage of claims received from foreign providers.
- Submit the information to eds@ardx.net.
 - Place in the subject line “Foreign Provider Volume”.

EDS Implementation Next Steps

EDS Implementation Next Steps

ED Materials / Information	Target Date
Deadline for New 2013 MAOs and Other Entities to Submit EDI Agreement <i>Note: MAOs and other entities that have not submitted EDI Agreements and Submitter Applications by this date are considered non-compliant.</i>	February 15, 2013
PACE Certification Deadline	February 28, 2013
EDS Industry Feedback Request – Part B Drug and Foreign Provider Volume	February 28, 2013
EDS User Group	March 7, 2013
Getting Started Webinar Series	April 22, 2013
Risk Adjustment Filtering Logic	Summer 2013

Questions & Answers

Resources

Resources

Resource	Resource Link
CEM/CEDI Technical Reporting Formats	http://www.cms.gov/MFFS5010D0/20_TechnicalDocumentation.asp
Centers for Medicare & Medicaid Services (CMS)	http://www.cms.gov/
CSSC Operations	http://www.csscooperations.com csscooperations@palmettogba.com
EDS Inbox	eds@ardx.net
Technical Assistance Registration Service Center (TARSC)	http://www.tarsc.info/
X12 Version 5010 Standards	https://www.cms.gov/Regulations-and-Guidance/HIPAA-Administrative-Simplification/Versions5010andD0/index.html?redirect=/Versions5010andD0/
Washington Publishing Company	http://www.wpc-edi.com/content/view/817/1

Closing Remarks